

Kitchen Measuring Guide

If you have any questions concerning the use of this guide, please don't hesitate to call us!

INFORMATION ABOUT YOUR EXISTING KITCHEN:

1. Define your structural parameters.

Interior walls are: drywall plaster block brick

Finished floor will be: ceramic tile wood laminate vinyl

Floor to ceiling height: ___ ft. ___ in.

Floor to soffit height: ___ ft. ___ in. Soffit depth: ___ ft. ___ in.

(A soffit is the finished bulkhead between the top of the cabinets and the ceiling in some homes.)

Door dimensions: (Measure from outside edge of trim to outside edge of trim) ___ x ___ ___ x ___

Window dimensions: (Measure window from outside edges of trim) ___ x ___ ___ x ___ ___ x ___

Plumbing: okay as is. Needs to be: changed moved updated

Electrical: okay as is. Needs to be: changed moved updated

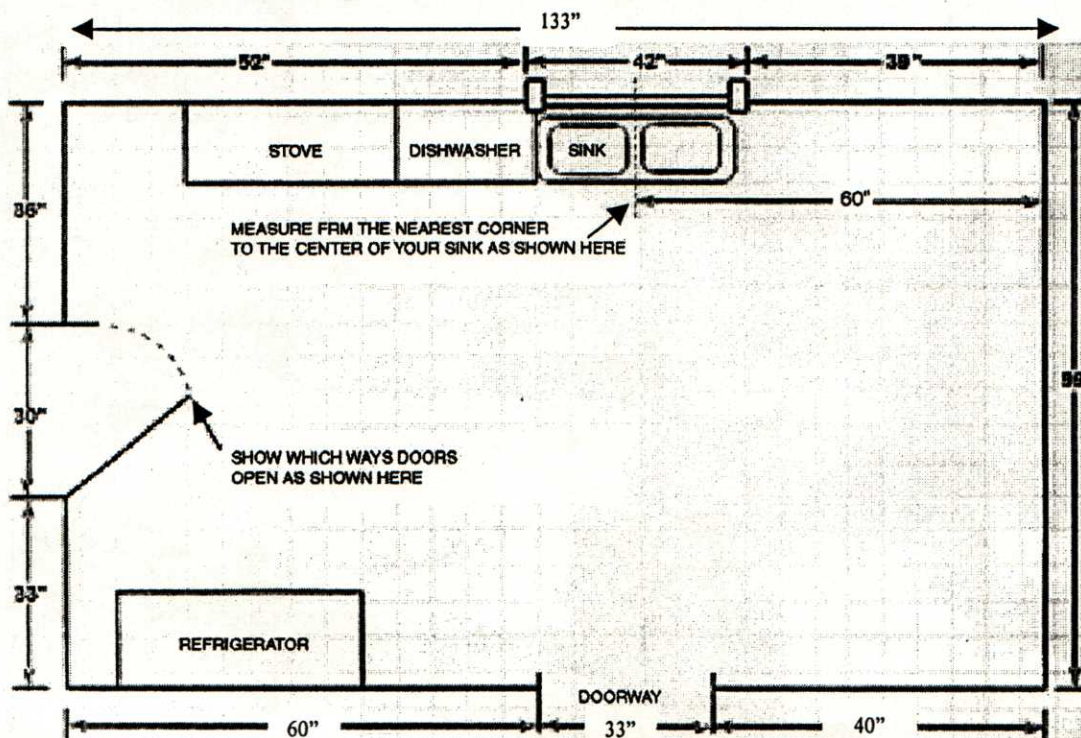
2. Create an inventory of the appliances and fixtures you'll have in your new kitchen.

	Model	Size: W x H x D	Hinge Position (L/R, facing appliance)
Range			
Refrigerator			
Sink			
Dishwasher			
Exhaust Hood			
Microwave			
Cooktop			
Wall Oven			
Compactor			
Other			

3. Make a rough sketch of your existing kitchen.

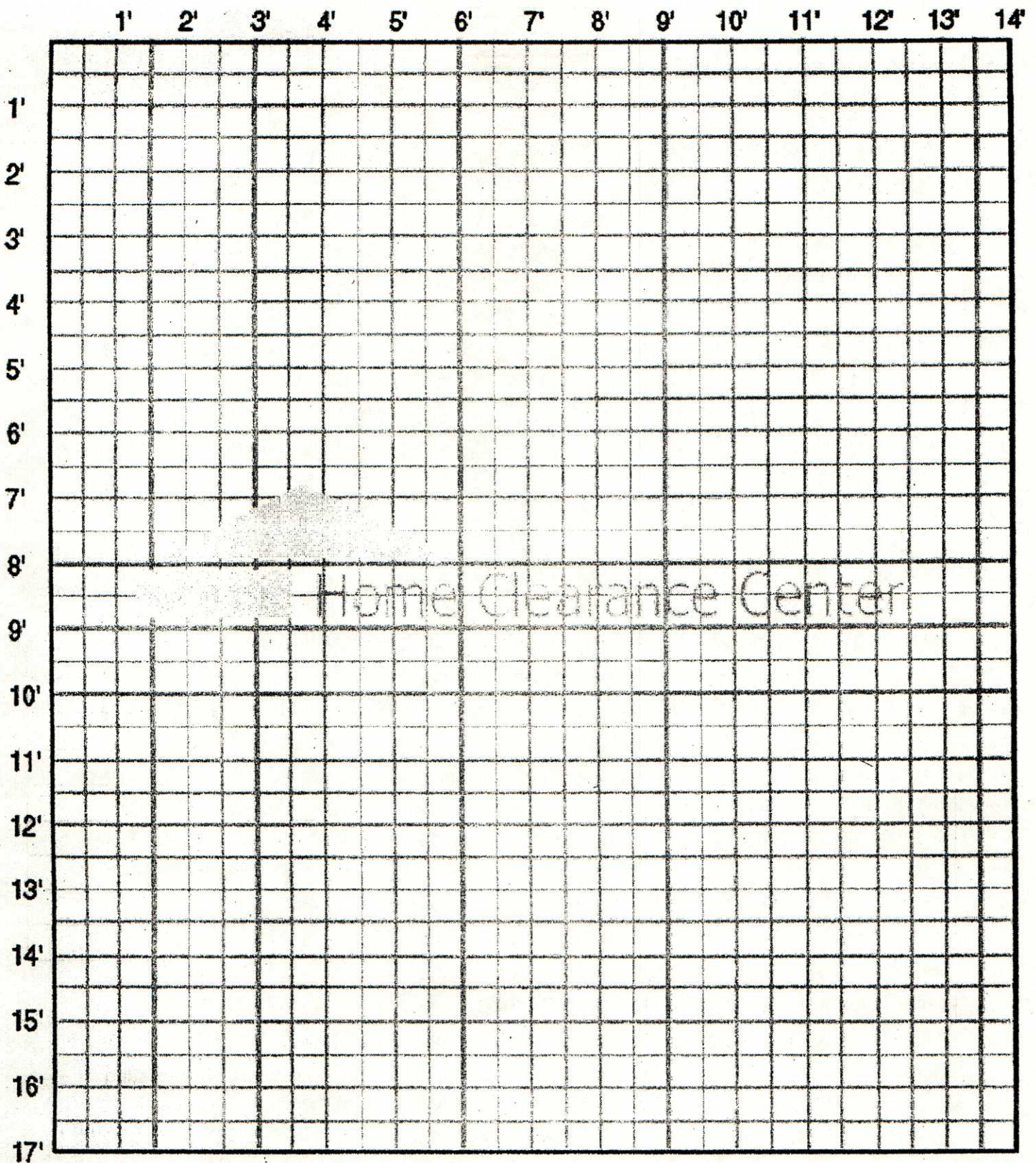
Use the example below and sketch your kitchen on the other side of this page.

1. Measure and draw all interior walls on the page. Don't worry about measuring your existing cabinets. Measure the room as if it were bare, with the exception of sink and appliances.
2. Starting with the wall the sink is on, locate centerline of sink and measure to the nearest corner. Show on grid.
3. Continue working clockwise, recording all measurements of the room, marking locations and dimensions of windows, and kitchen entries. If the entry has a door, indicate which way the door opens as shown in the example.
4. Finally, note the location of each appliance in your kitchen



The example on the left provides the information we'll need to give you an accurate estimate on your cabinets & countertop selections.

Depending on the size and complexity of your kitchen, once an estimate is accepted and a deposit received a Home Clearance Center representative may need to verify your measurements prior to ordering materials.



3. Final measuring steps

- Use dotted line to indicate location of soffits (if any)
- Indicate the location (including height off of floor) of wall switches in cabinet area.
- Indicate the location (including height off of floor) of wall electrical outlets in cabinet area.

4. Bring this guide back to Home Clearance Center where at no charge a designer will:

- Assist you in choosing a cabinet line, door style and finish based on your budget and taste.
- Assist you in choosing a countertop material based on your budget.
- Design your kitchen based on your kitchen layout and material selections.
- Present you with computerized renderings showing you what your kitchen will look like upon completion.
- Provide you a separate overall price quote on your cabinets and countertops.
- Depending on the size and complexity of your kitchen, once an estimate is accepted and a deposit received a Home Clearance Center representative may need to verify your measurements prior to ordering materials.